

WHEN DISASTER STRIKES WHO'S IN CONTROL?

Ken Scaife

Ohio Agricultural Research and
Development Center

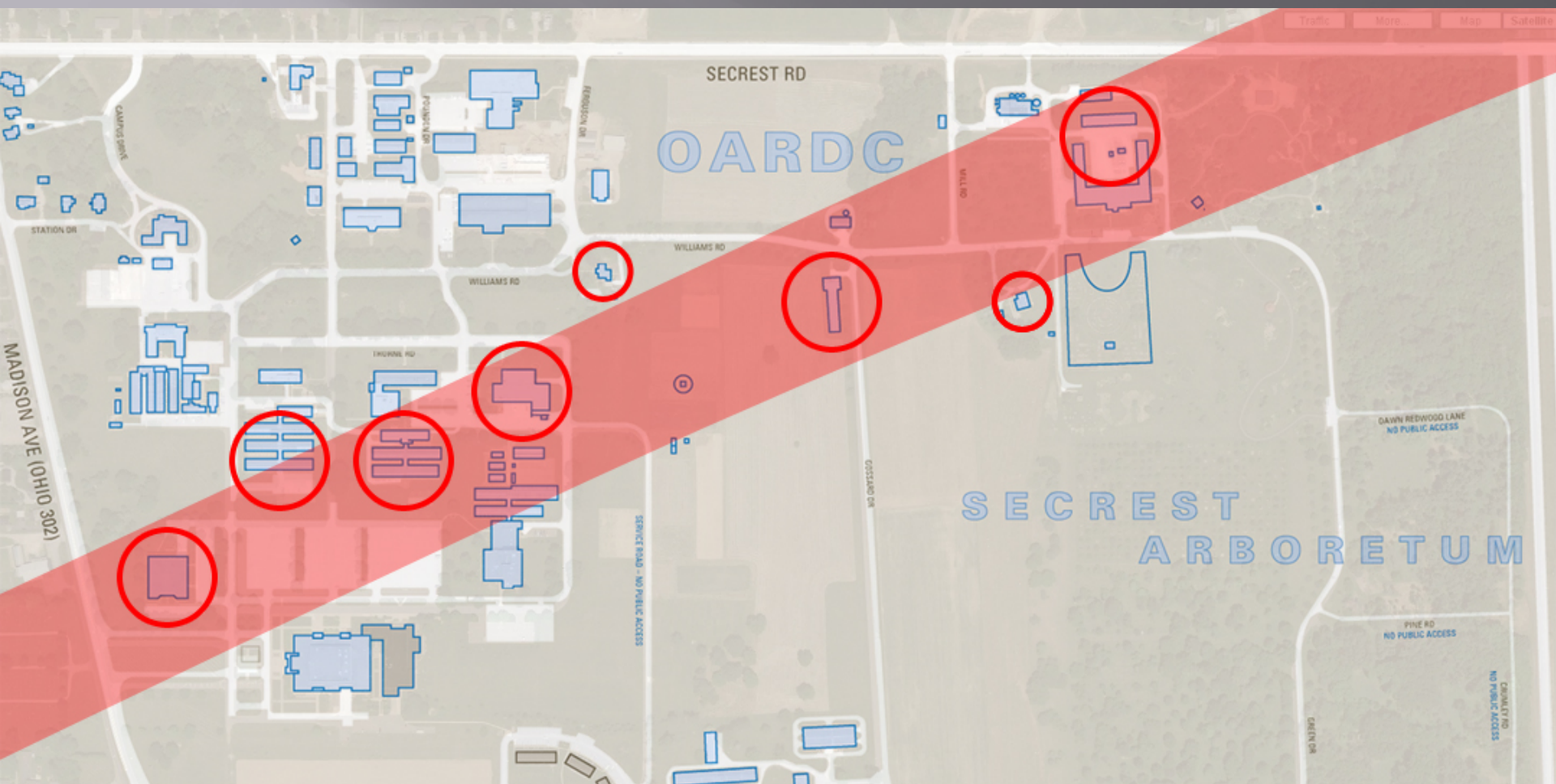
Wooster, Ohio

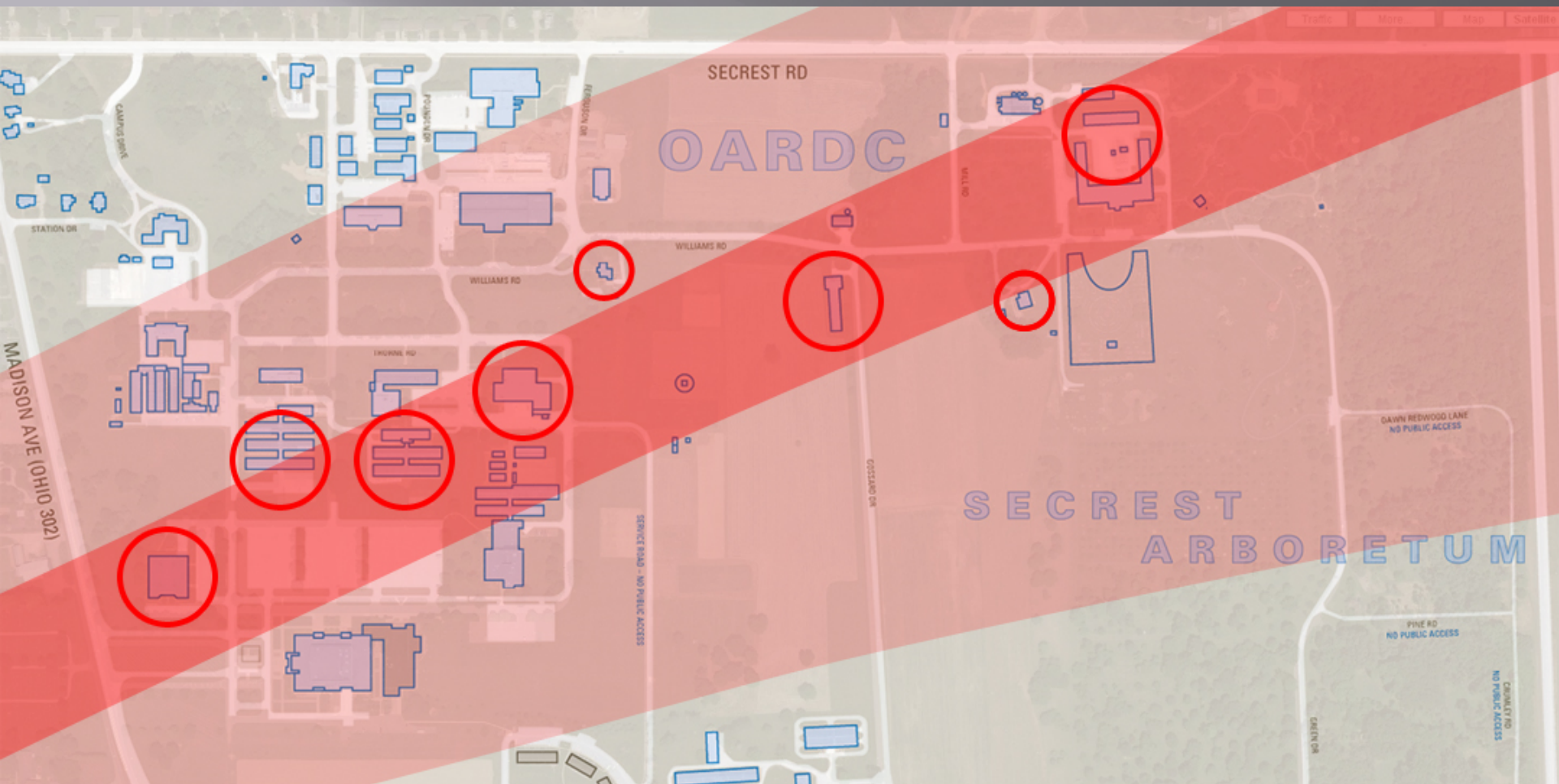


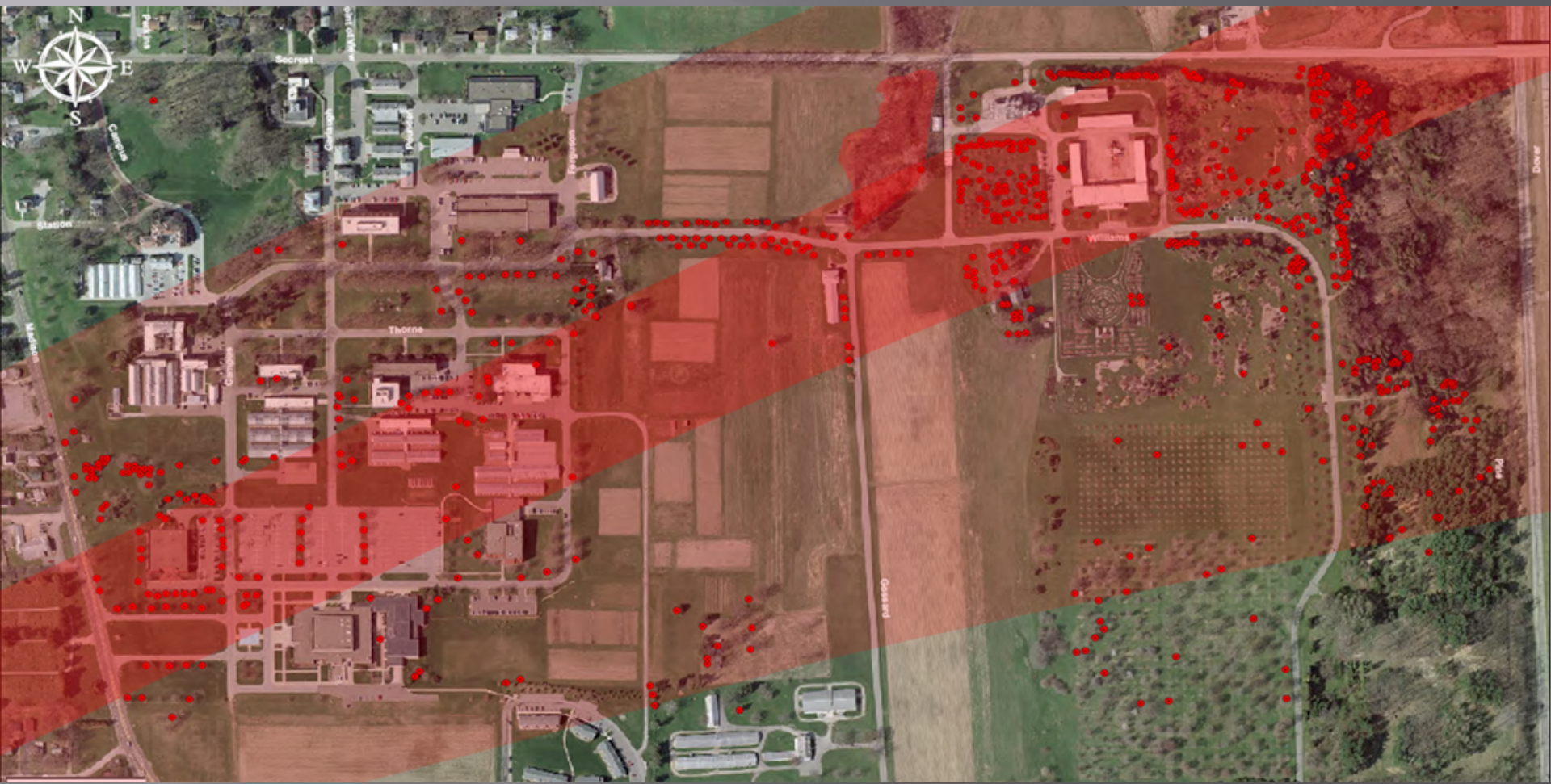


September 16, 2010, 5:30 p.m.













Research Services Bldg.



Research Services Bldg. Interior Damage



Gourley Greenhouses





Williams Greenhouses





Agricultural Engineering





Rice and Stone Houses



Research Operations Service Building







Grain Storage/Feed Mill



Secrest Arboretum







Research Losses



After the event...

- ▣ Emergency Management
 - State and local police secure the area
 - Emergency command post
 - Disaster area declaration
 - OSU Public Safety closes campus
- ▣ University emergency response plans take effect
- ▣ News media management

Damage Summary

- ▣ 26 greenhouses damaged, some completely destroyed
- ▣ Ag Engineering workshop destroyed
- ▣ All roofs on core part of campus damaged
- ▣ Research Services Bldg. (admin. offices)
- ▣ Farm Operations Facilities
- ▣ 30,000 sq. ft. storage space lost– storage barns and other buildings
- ▣ Secrest Arboretum – over 1600 trees
- ▣ Significant losses in research capacity – interruptions, loss of germplasm

- ▣ OSU President E. Gordon Gee's "One University" concept in action.
- ▣ Commitment by various OSU offices to provide personnel and resources to deal with the disaster recovery.
 - OSU Public Safety
 - OSU Risk Management Office – Insurance and legal matters
 - Financial – Treasurer's Office – cash flow
 - Facilities Operations and Development
 - ▣ Charged with managing remediation, renovation and repair efforts.

Remediation

- ▣ Remove damaged trees
- ▣ Remove building debris, shore up damaged structures
- ▣ Rent temporary storage containers
- ▣ Move displaced staff to alternative work sites
- ▣ Secure building contents – close window and door openings
- ▣ Assess building structural integrity – hidden roof penetrations
- ▣ Temporary roof repairs

- ▣ OSU and OARDC Administration begin discussions with Zurich to discuss assessment, remediation, valuation processes.
- ▣ Tours with local officials, legislators, governor other agencies (USDA).
- ▣ Town hall meeting with faculty and staff
 - Allowed to enter secured buildings to remove personal items.

- ▣ Zurich hires BMS Cat - disaster recovery company.

- ▣ BMS Cat - 100 employees, six weeks.
 - Remove damaged contents from buildings, cleaning, mold control, package and store building contents.
 - Remove building debris from grounds.

- ▣ Zurich hires engineering firm to assess damage and begin valuation process.
 - Periodic meetings with OSU, OARDC and Zurich representatives.
 - Actual Cash Value versus Value to Repair.

- ▣ Zurich adjusters begin process of assessing value to damaged equipment, vehicles and building contents.
 - OARDC staff involvement – assist with id of damaged inventory, review and verify values.

- ▣ OSU's commitment to accelerate processes for competitive bidding, writing contracts, and issuing purchase orders to quickly hire architects and contractors .
- ▣ Temporary greenhouses constructed in six weeks, \$1.2 million.
- ▣ Utilities restored to east end of campus.

- ▣ Research Losses
 - Loss of germplasm, enzymes and other cryo-preserved samples
 - Interruption of research, grant activity, impacts to graduate students, ability to compete for grants (compromised research capacity)
- ▣ Tree losses – value of environmental services provided by trees, \$1.5 million
- ▣ Human Factor – sense of loss by faculty and staff expressed in various ways

Status Report

- ▣ As of January 2011, Over \$20 million in damage and research losses and climbing
- ▣ Negotiations on value of damage and losses continue between OSU Risk Management and Zurich continue
- ▣ Campus officially opens to public Jan. 21, 2011
- ▣ Evaluation of building replacement options – tied to insurance compensation, ability to raise capital funds
- ▣ Donations to restore Seacrest Arboretum
- ▣ Repairs to damaged structures continues
- ▣ Deconstruction of buildings began February 2011

Questions?

scaife.1@osu.edu

